

60'-0"

24x36

36x60 36x60

36x60 36x60

72x80

BEDROOM #3
11'-1" x 14'-2"

WALK
IN

LIVING ROOM
17'-2" x 14'-2"

DINING ROOM
10'-8" x 14'-2"

WALK
IN

MASTER
BATH

BATH #2

OPT. MEDIA WALL
REC. 2"

30'-0"

WALK
IN

BEDROOM #2
11'-1" x 10'-3"

UTILITY
ROOM

FOYER

KITCHEN
14'-2" x 14'-2"

MASTER BEDROOM
13'-7" x 14'-2"

LAIN SHELF
D W

W.H.

OPT. CAB. E.S.
OPT. D.S.

PAN

DWR

REF. SHELF

OPT.
D.W.

36x60

36x60

36x60

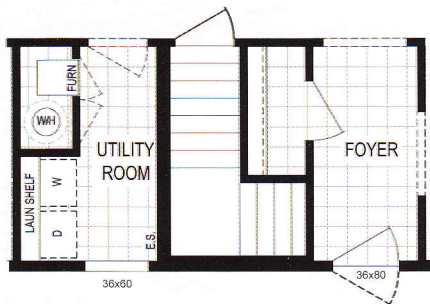
36x80

58x36 PW

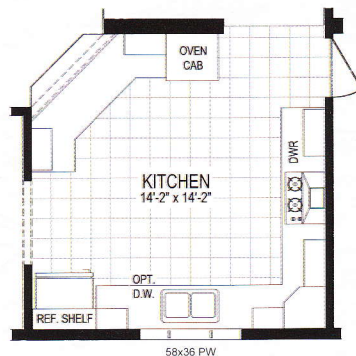
36x60

36x60

36x60



OPTIONAL BASEMENT STAIRWELL



OPTIONAL SWEET HART KITCHEN