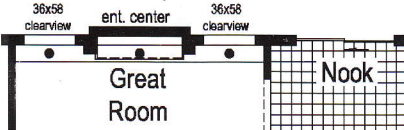
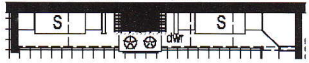


and 12' Ramp out

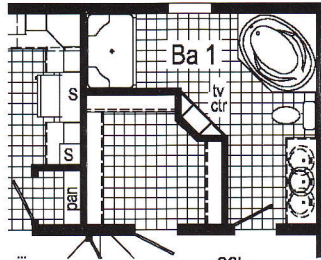


Optional Clearview Entertainment Wall
 opt. patio door at nook required with this option

opt low transom opt low transom

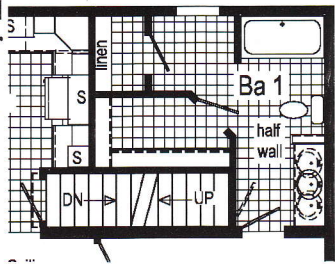


Optional Chef's Signature Hood

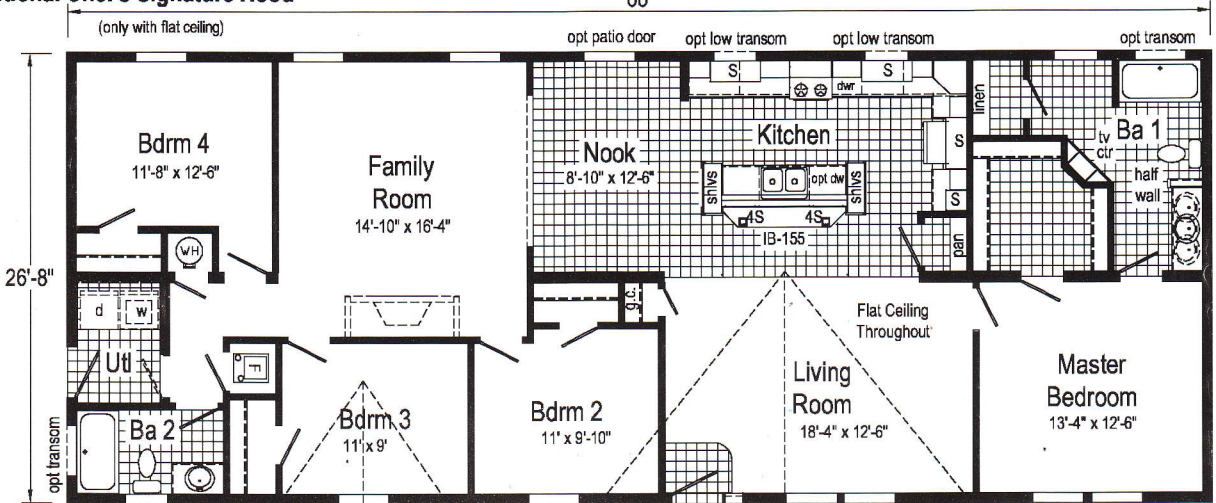


68'

Optional Glamour Bath
 (omits linen)



Optional Stairwell
 (omits pan)



(only with flat ceiling)

opt patio door opt low transom opt low transom opt transom

26'-8"

Flat Ceiling Throughout

opt S = Std. 4" staggered cabinet/opt 12" staggered opt

/ N/A with opt. cathedral ceiling