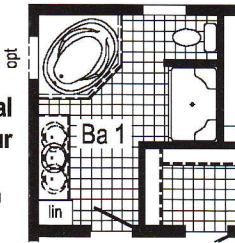
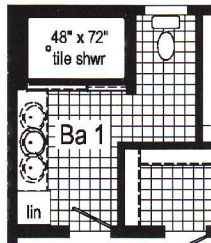


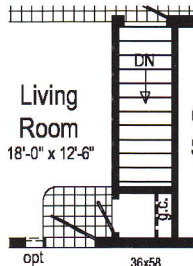
Optional Glamour Bath
(omits linen)



Optional 4'x6' Walk-In Tile Shower
(omits linen)



Living Room
18'-0" x 12'-6"

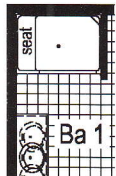


Optional Stairwell

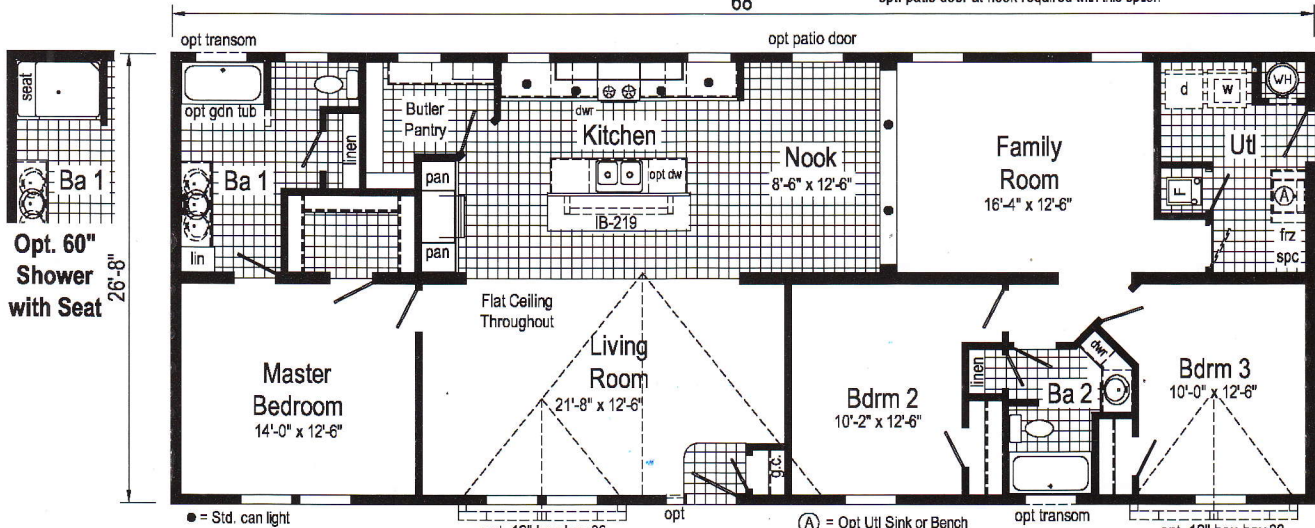


Optional Clearview Entertainment Wall
opt. patio door at nook required with this option

68'



Opt. 60" Shower with Seat
26'-8"



● = Std. can light

(A) = Opt Utl Sink or Bench